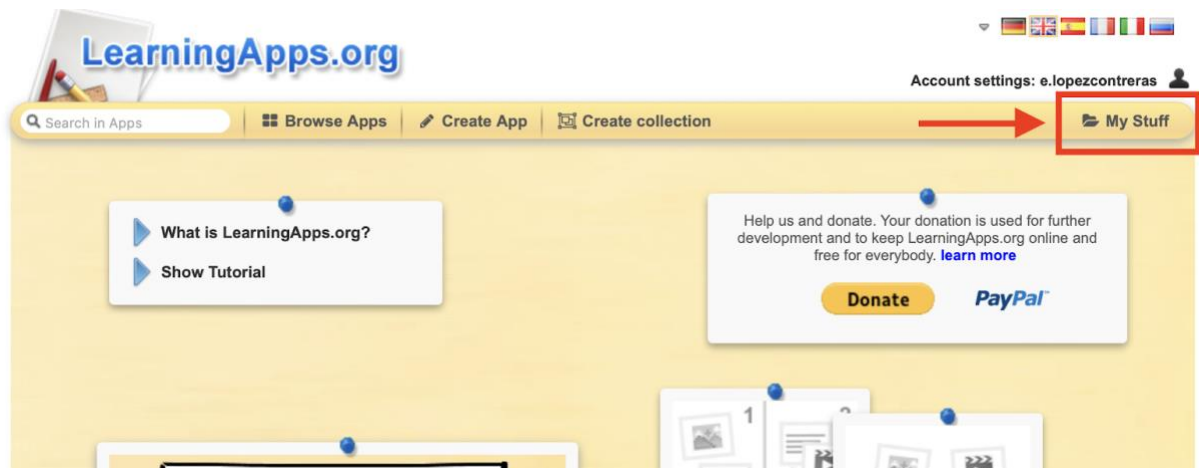
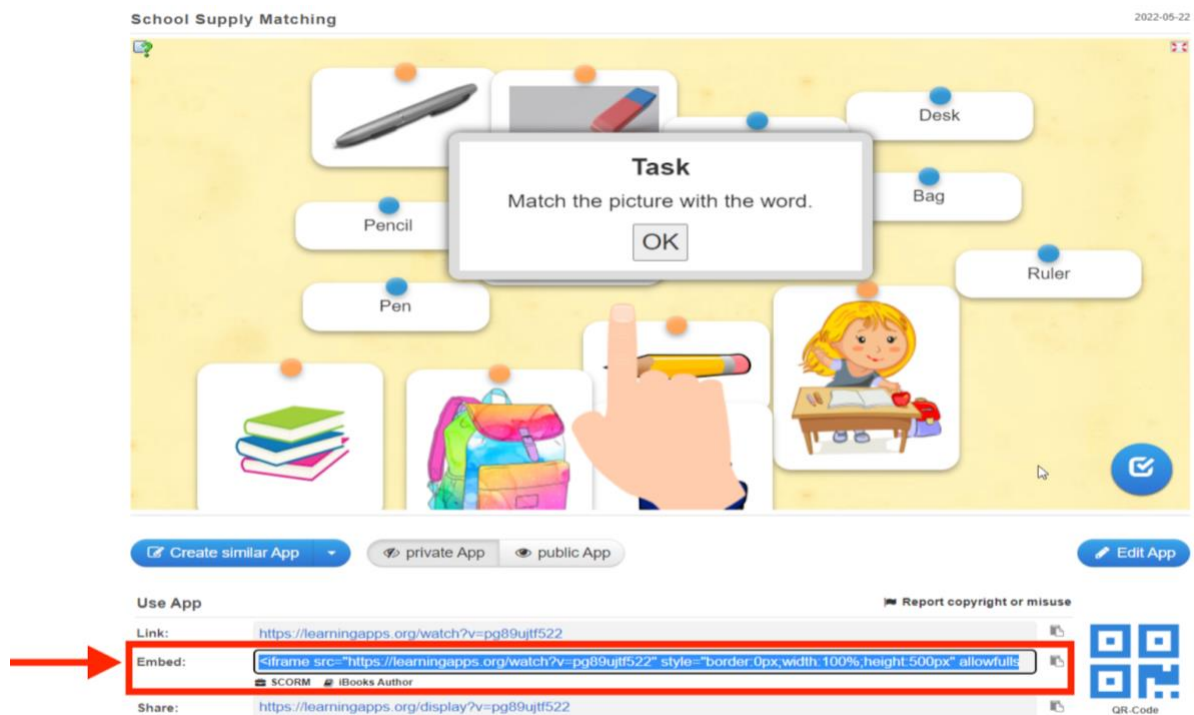


## Hands-on activity: Create your own digital escape room

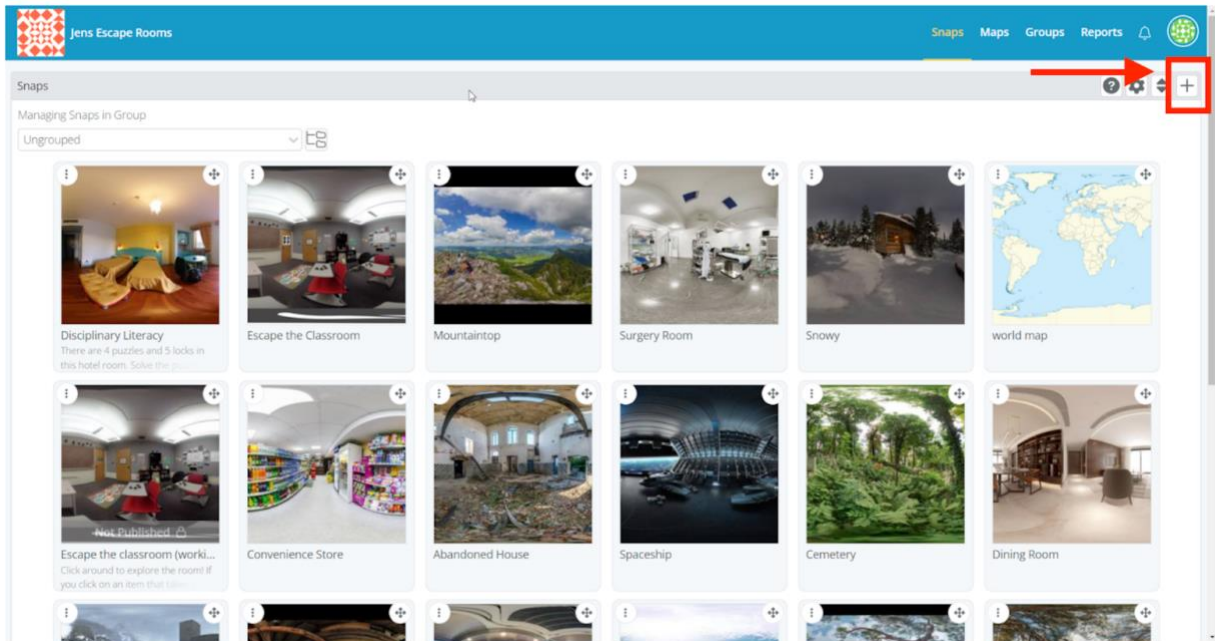
1. Choose an activity/puzzle in learningapps.org
  - a. Log on to the website with this username: **sample account** and password: **Sample4567**
  - b. Click “My Stuff” in upper right corner



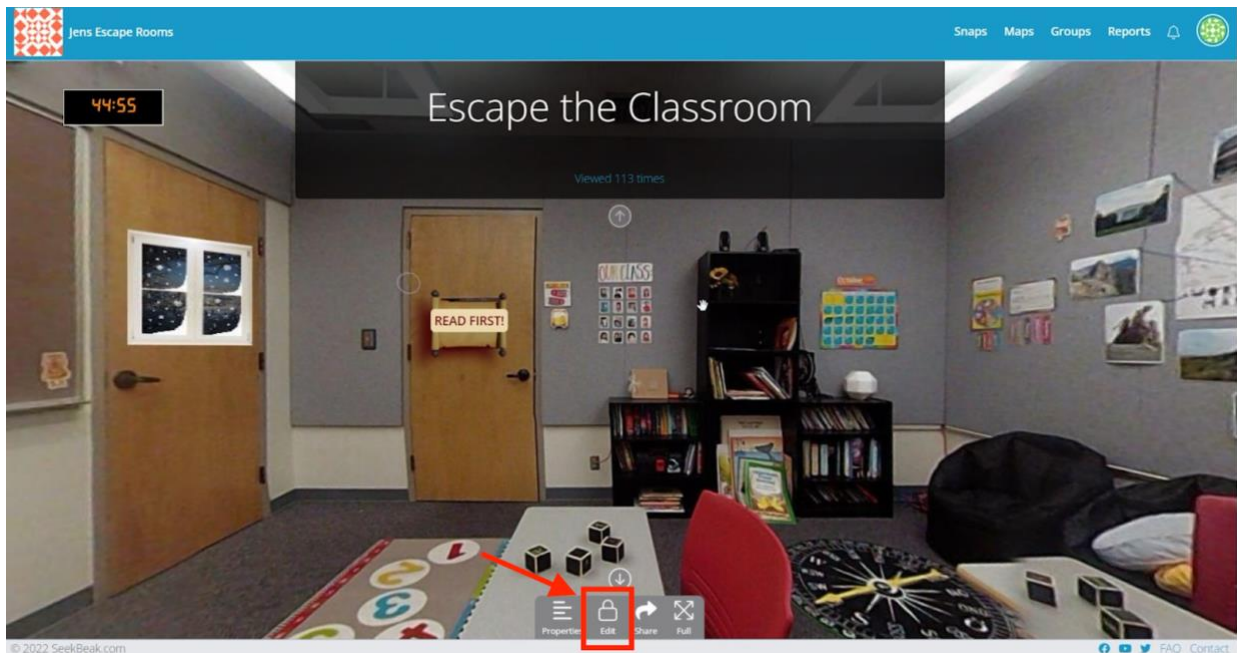
- c. Pick a sample puzzle you want to teach with
- d. Copy the embed link to the activity



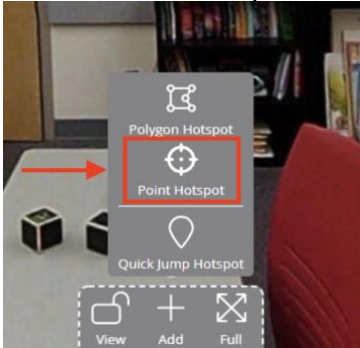
2. Upload (choose) your image in SeekBeak
  - a. Go to SeekBeak.com and logon with **jegbert@wsu.edu**, PW: **CALICO22**
  - b. When you log in, all the uploaded images will be visible
  - c. If you want to upload a new image, you can click the plus sign (+) in the upper right corner



3. Create a hotspot
  - a. Look around at points of interest and decide where you want to put hotspots
  - b. Click "Edit" at the bottom of the screen



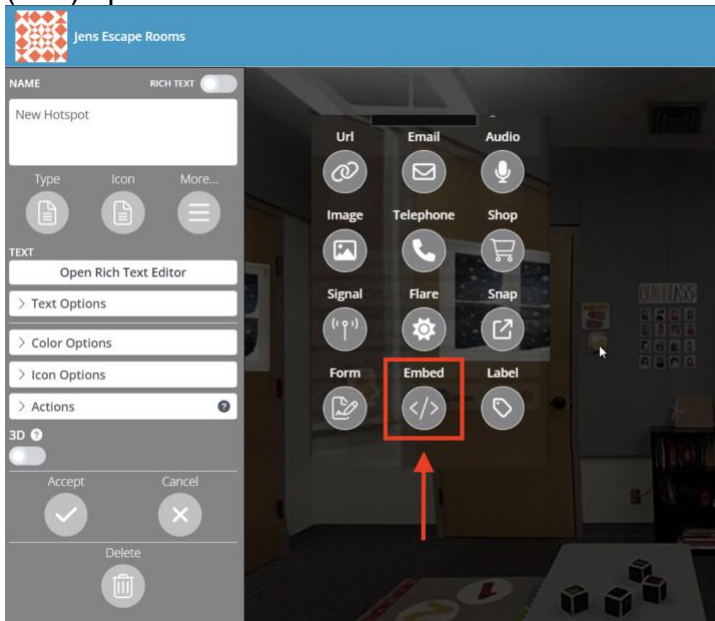
- c. Click “Add,” click “point hotspot”



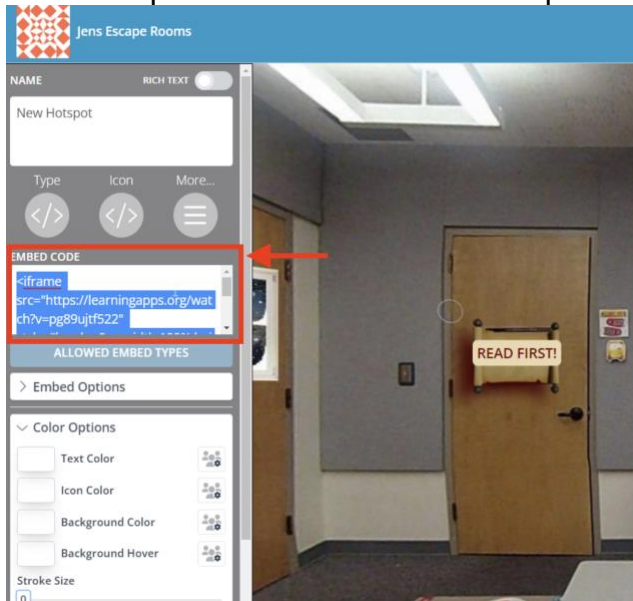
- d. Center crosshairs over chosen spot, and click to place



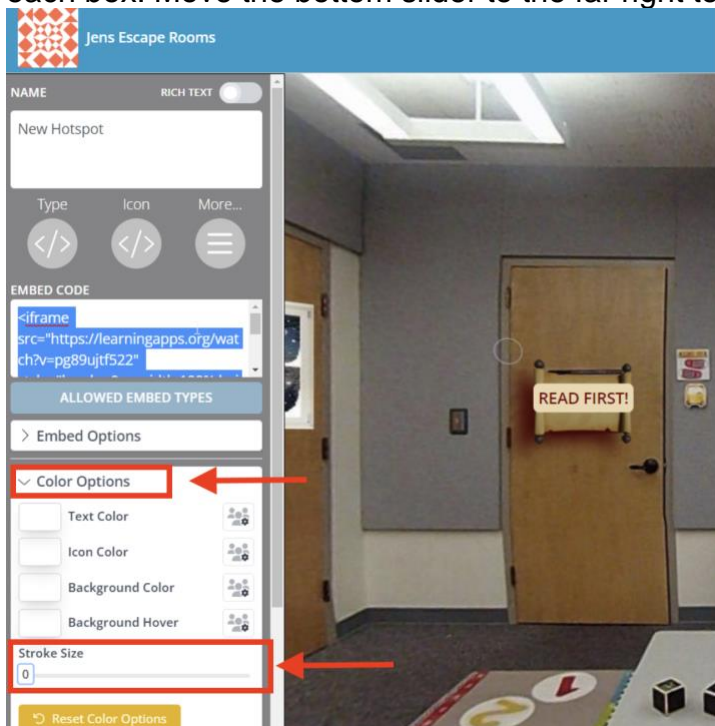
- e. In the left sidebar, click the button below “type” and select the “embed” (</>) option



- f. Paste the puzzle link into the embed space



- g. Click on “color options” and adjust the text color and icon color by clicking on each box. Move the bottom slider to the far right to make them transparent



- h. Click the “accept” check mark at the bottom of panel to save

#### 4. Check your work

- Click the red “Save” icon at the bottom of the main screen
- Click your hotspot to see if it works